

## Recreational fishing around Porquerolles

A national park is a territory recognized as an exceptional resourcing site. Noises and disturbances of nature to disrupt the tranquility of sites are prohibited.

For more information regarding the terrestrial and marine regulation : [www.portcrosparcnational.fr](http://www.portcrosparcnational.fr)



The Nav&co mobile application allows boaters to navigate while having access to essential information concerning maritime regulations, beaconing and surrounding biodiversity.



**Maison de parc national :**  
83400 Porquerolles  
Phone : +33 (0)4 94 58 07 24

**Head office :**  
Parc national de Port-Cros  
181, Allée du Castel Sainte Claire  
BP 70220  
83406 Hyères cedex  
Phone : +33 (0)4 94 12 82 30  
Fax : +33 (0)4 94 12 82 31  
Email : [accueil.pnpc@portcros-parcnational.fr](mailto:accueil.pnpc@portcros-parcnational.fr)  
[www.portcrosparcnational.fr](http://www.portcrosparcnational.fr)

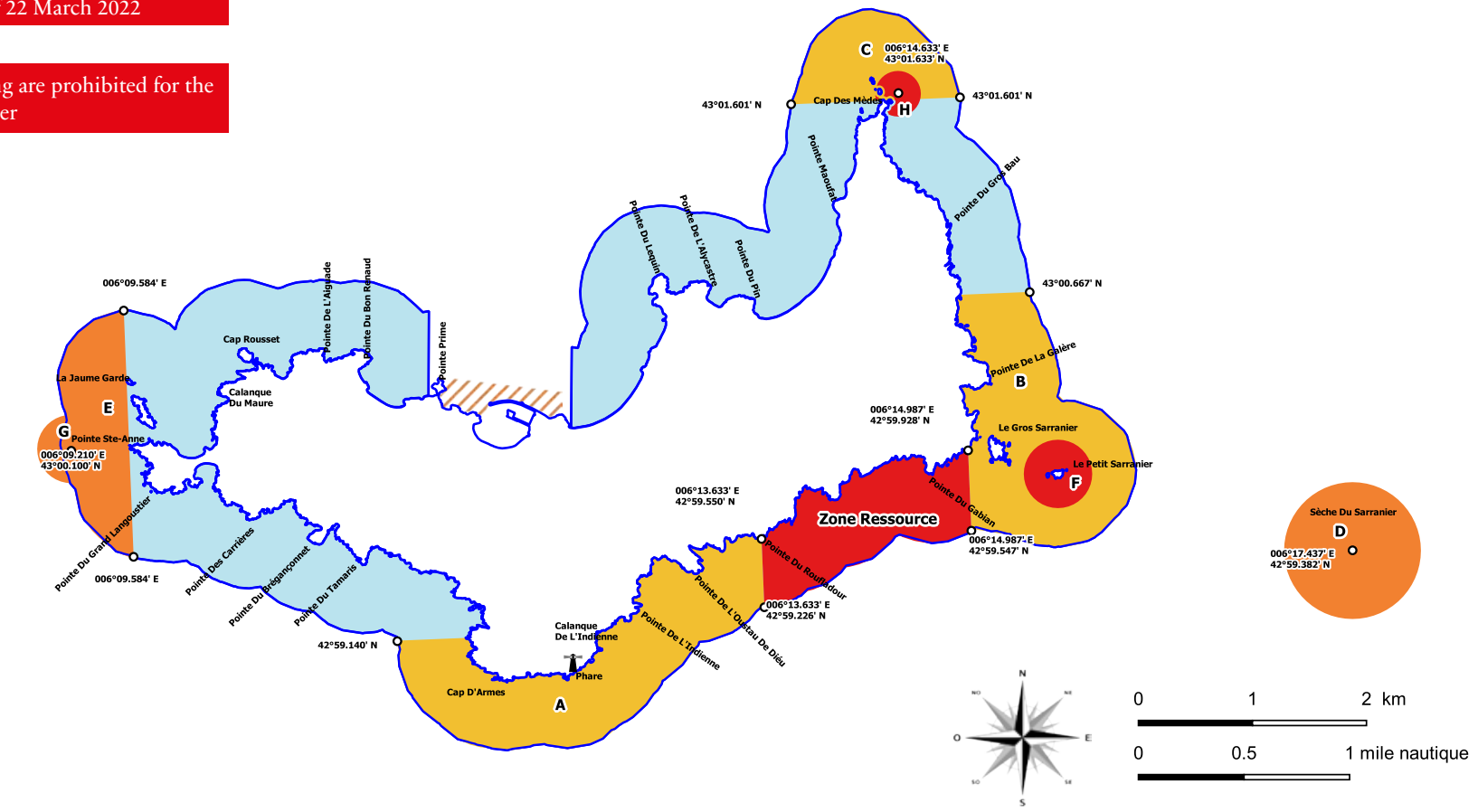
Printing Sira Phone : 04 94 74 00 09 - 2023

Urchin fishing is prohibited from 03/01 to 12/14  
Octopus fishing is prohibited from 06/01 to 09/30

Species and quantities are defined by the prefectorial order n° R93-2022-03-22-00002 of 22 March 2022

Leisure fishing and underwater fishing are prohibited for the corb and grouper

Regulation of recreational sea fishing around Porquerolles island  
Prefectorial order n° R93-2022-03-22-00001 of 22 March 2022



- Marine heart (600 meters). Catch limited to three pieces or 5 kg per fisherman depending on the species. Octopus fishing prohibited from 06/01 to 09/30.
- Spearfishing and amateur fishing prohibited from 07/01 to 08/31 and subject to authorization from 09/01 to 06/30
- Amateur fishing prohibited from 07/01 to 08/31 and subject to authorization from 09/01 to 06/30. Spearfishing prohibited all year.
- Any form of leisure fishing prohibited
- ▨ Spearfishing prohibited all year.

Samples from leisure fishing (angling and underwater hunting) are regulated in order to foster the resettlement of fishes in the waters of Porquerolles marine heart.

Respect the minimal sizes of catches  
Leave time to species to grow and reproduce

Reminder of some minimal sizes of catches :

Sargo .....	23 cm
Common two-banded sea bream.....	18 cm
Red porgy .....	18 cm
Scorpionfish .....	30 cm
Gilt-head bream and black seabream ...	23 cm
Sea bass.....	30 cm

### Resource area

Initiated by Natura 2000, the creation of this area comes from a concertation procedure between all sea users (professional and leisure fishermen, leisure boaters, inhabitants, authorities). It has for objective to create a reserve effect which on the long run will benefit adjacent areas called "buffer" at the East and West of the area. The national park undertakes scientific follow ups to measure the evolution of fishes settlements and therefore evaluate the expected reserve effect. Heavily colonized by the *Caulerpa taxifolia* algae this area is subjected to a reinforced monitoring as well as targeted eradication campaigns, undertaken by the national park's teams.

Perimeter of the resource zone : 600 m of the marine heart delimited :  
-at the West by the longitude 006°13.6335' E  
-at the East by the longitude 006°14.9871' E

# Yachting, fishing, diving around Porquerolles island



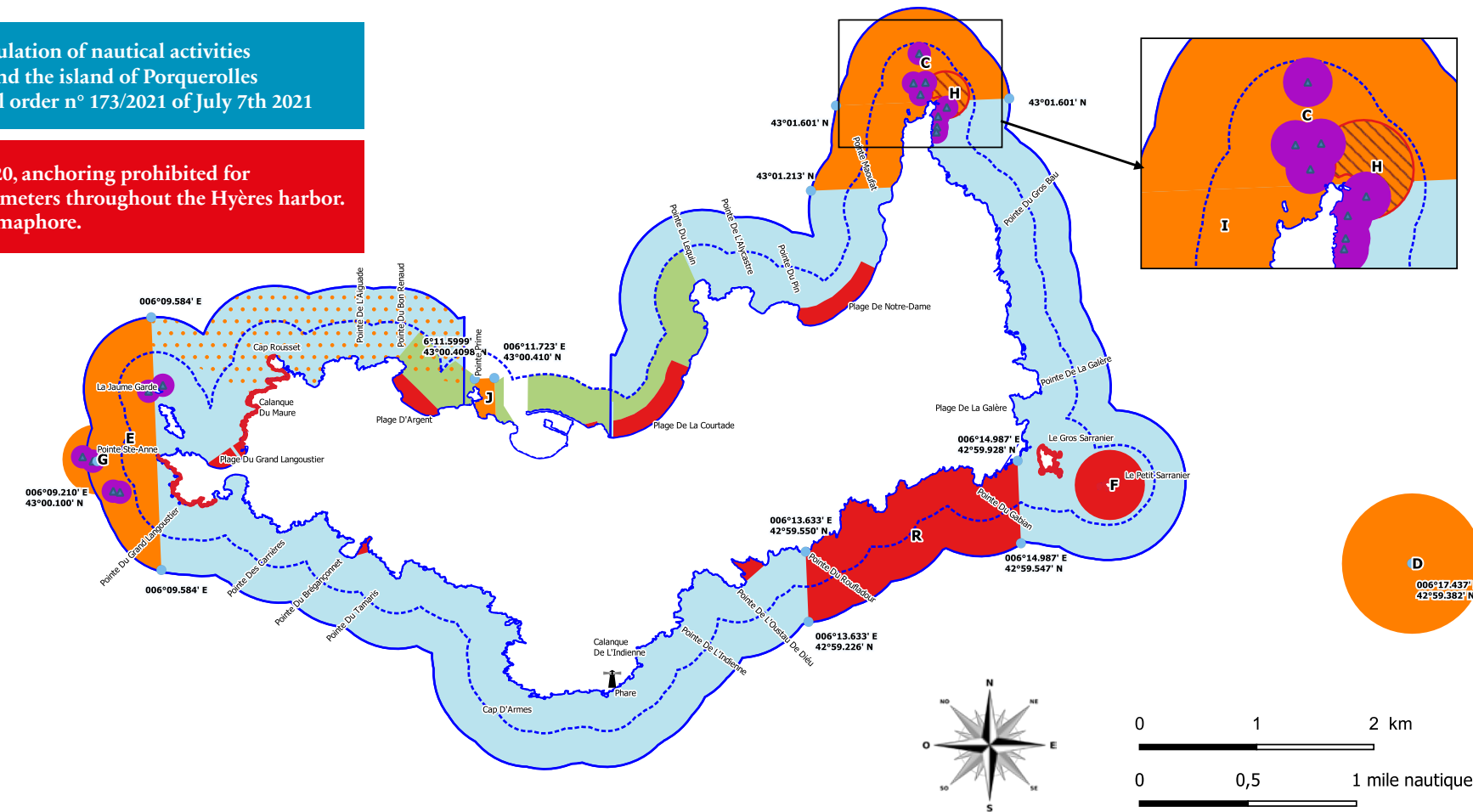
A national park is a territory of exception opened to all but under one's responsibility. It is protected by a specific regulation. Thank you for respecting it.

## Nautical activities around the island of Porquerolles

## Scuba diving around Porquerolles

Regulation of nautical activities around the island of Porquerolles  
Prefectorial order n° 173/2021 of July 7th 2021

Since 12/15/2020, anchoring prohibited for vessels over 24 meters throughout the Hyères harbor. Contact the semaphore.



- Docking, mooring and undocking prohibited from June 15th to September 30th
- Marine heart (600 m) / PWC and hauled devices prohibited / Autonomous scuba diving prohibited except authorization delivered by the director / Speed limited to 12 knots / Mooring prohibited to vessels of more than 24 m
- Limit of the 300 meters / Speed limited to 5 knots
- Areas prohibited to powered watercrafts
- Mooring prohibited (Areas C, E, G, I and J)
- Mooring and scuba diving prohibited (Area H)
- Mooring prohibited to vessels of more than 24 m
- Mooring prohibited except on diving device
- Mooring devices reserved for diving
- Mooring areas clean boats from June 15th to September 15th

For the safety of the marine environment users, mooring is regulated and speed limited to :

- 5 knots in the area of 300 meters,
- 3 knots in the harbour,
- 3 knots in a radius of 100 m around diving device.

Mooring of vessels of more than 24 m prohibited in the marine heart of the national park and in the bay of Hyères.

- Mooring is prohibited throughout the year in area J (area of high recruitment of juvenile fan mussels - *Pinna nobilis* - East of Pointe prime) outside the (private) mooring devices.
- Mooring is prohibited outside the reserved devices for diving vessels in the areas C, E, G and I.

From June 15th to September 30th, docking, mooring and undocking are prohibited :

- On the islet of Gros Sarranier ;
- Between Cap Rousset (43°00.5500' N - 006°10.3700' E) and the plage Blanche (43°00.1300' N - 006°10.1300' E) ;
- On the Grand Langoustier peninsula (between the points 43°00.1200' N - 006°09.6000' E and 42°59.9000' N - 006°09.9300' E).

Jet-skis, hauled devices, motorized surfboards and underwater scooters prohibited in the marine heart of the national park (600 m).

- > Aboard, avoid the use of domestic detergents : resort to biodegradable detergents.
- > Ensure to not discharge your used waters at sea : think about the marine life and the coastline's plants. Any form of discharge is prohibited in the waters of the national park.

Scuba diving in a scuba diving suit in the waters of the Port-Cros National Park is prohibited except for holders of a diving authorization. To obtain this authorization, each individual diver or each diving establishment must now register online on the CaPeL website (Online Dive Log) <https://capel.portcros-parcnational.fr/> This website allows him to sign the rules and transmit his diving data. In-person verification in the National Park houses remains necessary in order to obtain the "diving" sticker that is required to be affixed on the boat.



Divers, *signal yourself* at the surface with regulatory flags !

- For your safety, *mooring is not authorised within a radius of 100 meters* around diving sites.
- Authorized divers (individual or structure) have priority for mooring on diving buoys. Several vessels up to a limit of 3 vessels can moor there simultaneously during the time required for the dive. Mooring is prohibited for vessels over 15 meters.

Nighttime diving is regulated because the intensive use of underwater lighting disrupts the tranquility of fishes.

Warning :  
between 06/21 and 09/21 the access to certain parts of the island can be prohibited to the movement of people in case of a proven risk of fire.

The regulation of diving stipulates a limitation to 40 divers simultaneously per site and prescribes respectful behaviors of the habitats and species.

- It enforces in particular to not :
- feed fishes : they must stay wild,
  - flip the rocks,
  - get in contact with the bedrock or animal or plant species.